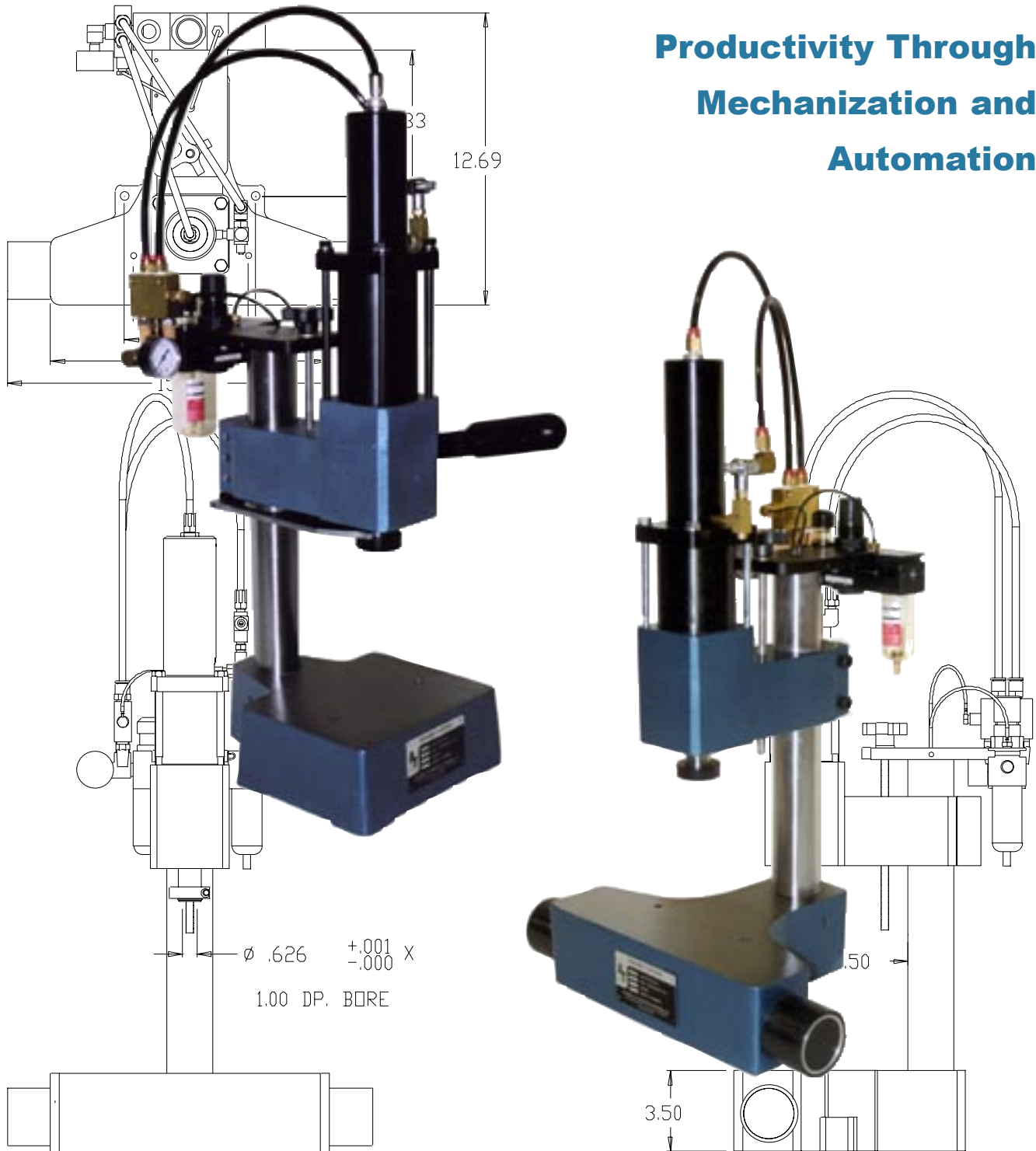


Pneumatic Stakers & Press-Stakers

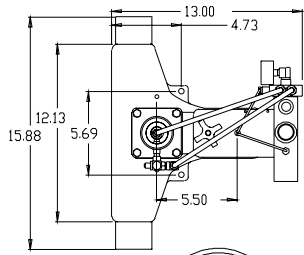
For Small Part Assembly

**Productivity Through
Mechanization and
Automation**

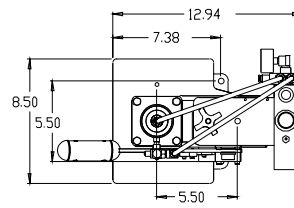


ASSEMBLY & AUTOMATION TECHNOLOGY, INC.

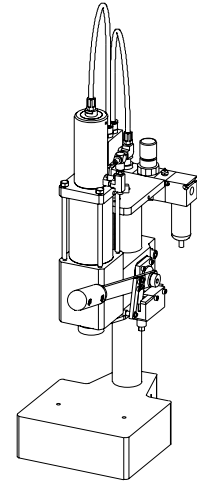
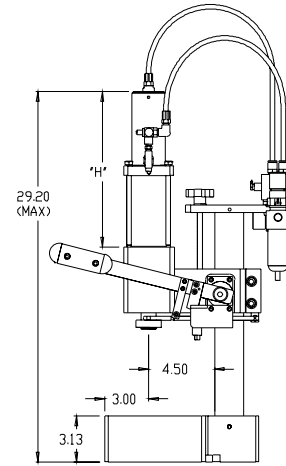
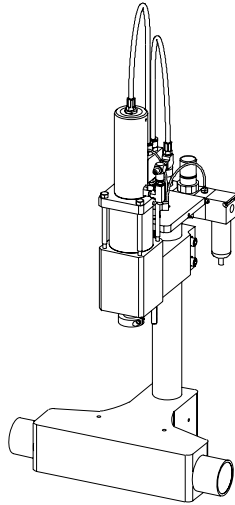
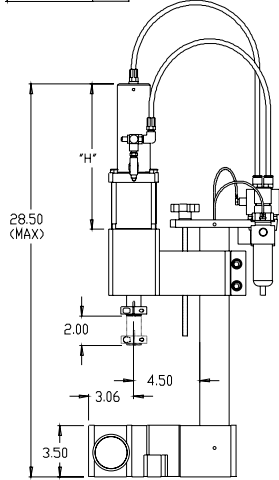
PNEUMATIC STAKER AND PRESS STAKER SPECIFICATIONS



S-5000/S-8000 STAKER



PS-3000/PS-5000 PRESS STAKER



	S 5000	S 8000	PS 3000	PS 5000
Impact force @ 100 PSI (lbs)	5000	8000	3000	5000
Shut height, spindle to base (inches)	2-7	2-7	2-7	2-7
DIMENSION "H" (inches)	9.90	9.90	9.60	10.60
Tooling holes in base	(2) 5/16 - 18 x 5	(2) 5/16 - 18 x 5	(2) 5/16 - 18 x 5	(2) 5/16 - 18 x 5
Ram tool hole (dia. x depth) (inches)	0.625 x 1.00	0.625 x 1.00	N/A	N/A
Max air pressure (PSI)	100	100	100	100
Air usage (cu. ft. free air per full stroke cycle)	.01	.02	.01	.01
Weight (lbs)	77	80	66	69

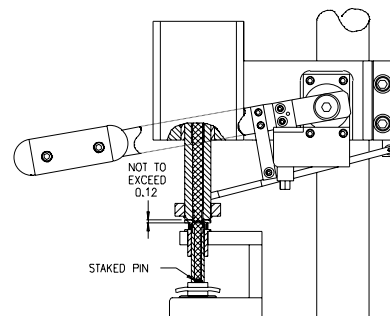
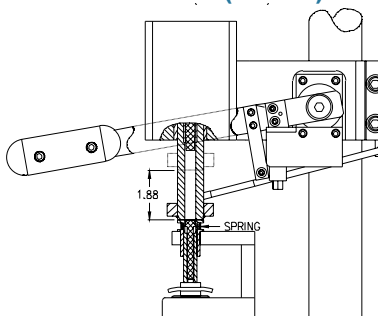
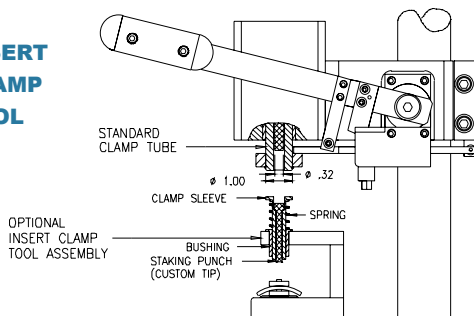
PRESS STAKER STAGES OF OPERATION

LOAD PARTS

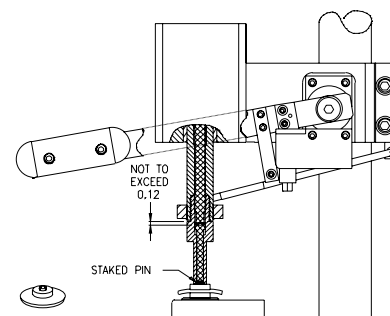
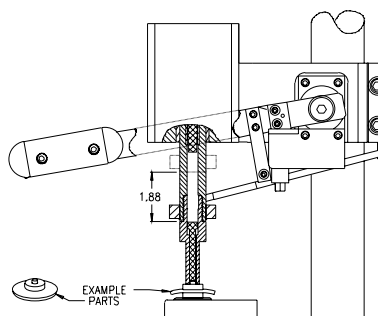
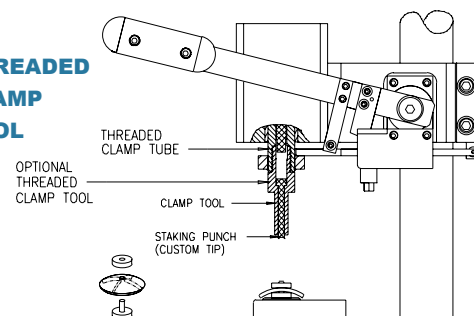
PRESS (CLAMP)

STAKE

INSERT CLAMP TOOL



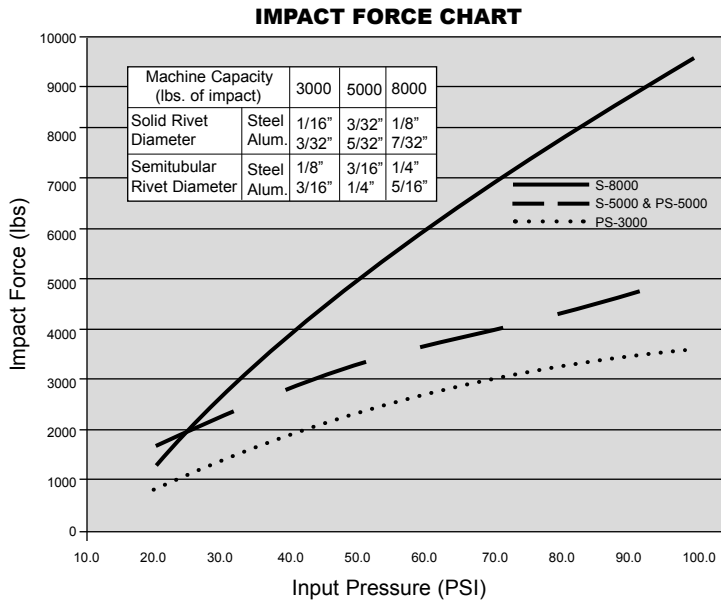
THREADED CLAMP TOOL



PNEUMATIC STAKER AND PRESS STAKER FEATURES



STAKER



PRESS STAKER

- Low force (1 oz.) dual palm non-tie down/non-repeat pneumatic safety actuators (standard).
- Head assembly less column and base (optional).
- Foot switch (optional).
- Non-rotating ram (optional).

- Foot switch actuates the Stake operation only when clamp arm is in the clamped (down) position.
- Threaded clamp tube (optional).
- Threaded clamp tool (optional).
- Insert clamp tool assembly allowing quick production changes (optional).

- Very low air consumption.
- More consistent impact than electric stakers.
- "Formed Head" height repeatable within .001 inches.
- More reliable than electric stakers.
- Cast iron base with bench-top mounting holes.
- Precision-ground cast iron base.
- Adjustable height cast iron head bracket.
- High velocity impact.
- Filter/regulator/lubricator with pressure gauge.
- Production rates up to 60 cycles per minute.
- Dry seal models (optional).
- Custom tooling available.

APPLICATIONS

- | | | |
|--|--|---|
| <ul style="list-style-type: none"> ■ Automotive ■ Plastics ■ Electro-Mechanical | <ul style="list-style-type: none"> ■ Appliance ■ Lighting ■ Medical | <ul style="list-style-type: none"> ■ Toys/Games ■ Mechanical ■ Electronics |
|--|--|---|

TECHNICAL SUPPORT

Assembly & Automation Technology will utilize its decades of experience to provide sample part evaluation, application engineering assistance, and custom tooling design.

Please call or send your sample parts today for a free quotation.

OTHER PRODUCTS

STANDARD PNEUMATIC PRESSES



**PRESS
P-70**

- 200, 700, 1400, 2100 lb. capacity at 100 PSI.
- Cast iron base and head bracket.
- Adjustable, repeatable stroke.
- Non-rotating ram.
- Double acting cylinder.
- Flow control for stroke speed adjustment.
- Low force (1 oz.) dual palm safety actuators with non-tie down, non repeat control.
- Filter / regulator / lubricator with pressure gauge.



**PRESS
P-200**

STANDARD PIN INSERTERS



**INSERTER
PI-700 PI-1400**

- Pneumatic and manual press models with automatic pin feed.
- Pneumatic press forces up to 700 lbs. or 1400 lbs.
- Pin sizes up to 1/4 inch diameter.
- Pin lengths from 1/4 to 1 1/4 inches.
- Low force (1 oz.) dual palm safety actuators with non-tie down, non-repeat control (pneumatic press models).
- Adjustable shut height up to 7 inches (standard).
- Adjustable stroke from 2 to 3 inches.
- Insertion height sensed to within .001 inches.



**MANUAL INSERTER
PI-M**

STANDARD AUTOMATIC SCREWDRIVER



S-250

- Model S-250 for screws, nuts and threaded parts.
- #3 to 1/4 screw, up to 1" long (standard).
- Precise placement torque and depth.
- Easy set up and adjustment.
- Automatic feed.
- Pneumatic operation.
- Built for durability, low maintenance and long life.

CUSTOM AUTOMATED SYSTEMS



Assembly & Automation Technology, Inc. has been creating innovative solutions for its customers since 1985 by capitalizing on its engineering depth with over 30 years of experience designing and manufacturing over 800 manual, semi and fully automatic assembly machines. This equipment is being used for the following applications: automotive, plastics, electromechanical, appliance, lighting, material handling, toy/game, mechanical, packaging, medical and electronics. We have succeeded where others have failed. Challenge us with your application.



ASSEMBLY & AUTOMATION TECHNOLOGY, INC.

9 Presidential Way Woburn, MA 01801 Phone: 978/692-1801 Fax: 781/935-6333
Web: www.assemblyandautomationtech.com